



## Perran Springs Holiday Park - Species List

This list is a work in progress, which will be added to, when any new discoveries are made. If you can help by adding anything we have missed, then please send an email, saying when you were on holiday with us and listing which additional species you have spotted on our park.

The Species List, is quite varied, but is missing many plants, insects and birds in particular, which I'm sure we can add in the future. The spider section is also very thin, as although we try to encourage all wildlife to the park, I have a real fear of spiders and will not go close enough to any in order to identify them! – with over a 50,000 spiders to the average grassy acre, and up to 2 million in some cases, I'm sure I've purposely missed quite a few of them! Some species on the list are visiting species and are not necessarily resident on the park.

Please help us expand the list: Contact us via email with any of your own Perran Springs Species List New Discoveries and your own Nature Photos, if you would like them added to our website's Nature Gallery.

All photographs on these pages have been taken at Perran Springs Holiday Park.



## Mammals

Red Fox

Badger

Grey Squirrel

Rabbit

Mouse

Common Pipistrelle Bat

Western Hedgehog

Common Mole

Common Shrew

Deer





## Fish

Common Carp

Crucian Carp

Mirror Carp

Ghost Carp

Bream

Roach

Rudd

Tench

Perch

Eel



## Dragonflies and Damselflies

Hawker Dragonfly

Common Blue Damselfly

Blue-Tailed Damselfly

Demoiselle

Black-Tailed Skimmer

Common Darter

Emerald Damselfly

Beautiful Demoiselle





## Reptiles and Amphibians

Common Frog

Common Toad

Smooth Newt

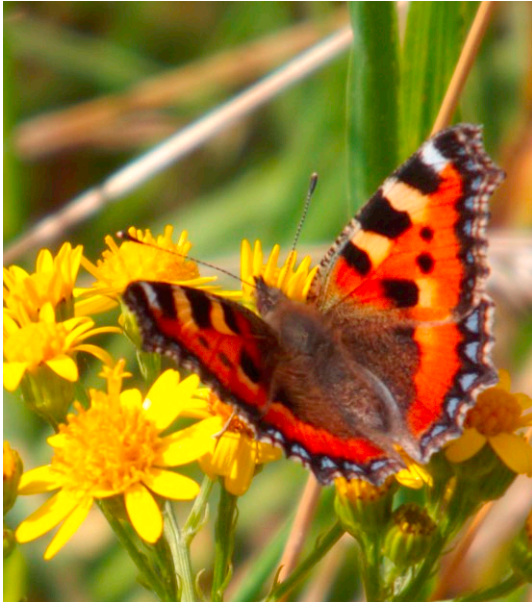
Grass Snake

Slow-Worm



## Birds

- Moorhen
- Mallard Duck
- Kingfisher
- Canada Goose
- Grey Heron
- Cormorant
- Collared Dove
- Woodpecker
- House Martin
- Pied Wagtail
- Robin
- Swift
- Wren
- Blackbird
- Blue Tit
- Jay
- Magpie
- Jackdaw
- House Sparrow
- Goldfinch
- Bulfinch
- Cuckoo
- Barn Owl
- Pheasant
- Buzzard
- Sparrowhawk
- Wood Pigeon



## Butterflies

Common Blue

Green-Vined White

Small Tortoiseshell

Red Admiral

Peacock

Meadow Brown

Wall Brown

Small Copper

Gatekeeper

Orange Tip





## Moths

Cinnabar

Burnet

White Ermine

The Drinker

Elephant Hawk Moth

Rosy Footman

Magpie

Black Arches

Bordered Beauty

Fourspotted Footman

Flame Shoulder

Chinese Character

Bloodvein





## Insects

Pond Skater

Water Boatmen

Grasshopper

Ladybird

Crane Fly

Hover Fly

Common Wasp

Ant

Bumble Bees

Beetles



## Spiders and Others

Spider

Millipede

Centipede

Caterpillar

Earthworm





## Trees

English Oak

Hawthorn

Common Holly

Sycamore

Rowan

Silver Birch

Italian Alder

White Poplar

Elder

Variegated Poplar

Blackthorn

Sweet Chestnut

Common Ash

White Willow

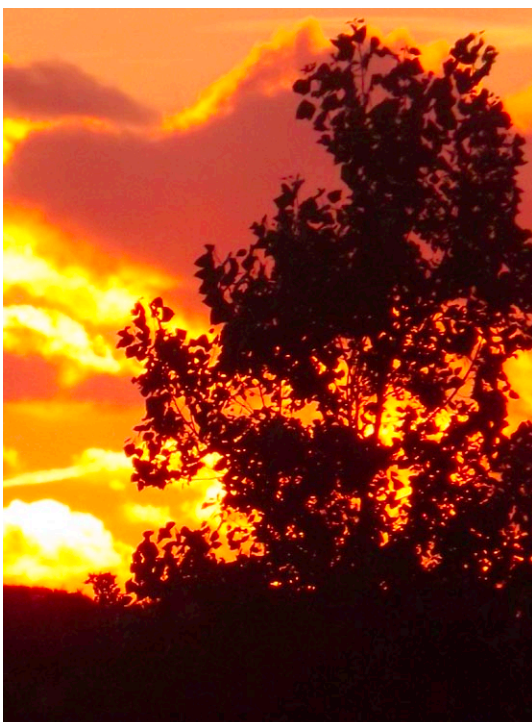
Goat Willow

Weeping Willow

Swedish Whitebeam

Conifer

Cornish Palm





## Other Plants

Grasses

Pendulous Sedge

New Zealand Flax

Fern

Hart's-Tongue

Giant Rhubarb

## Fungi, Moss and Lichen

Shaggy Inkcap

Oak Moss





## Shrubs

Rhodendron

Hydrangea

Pampas

Rose of Sharon

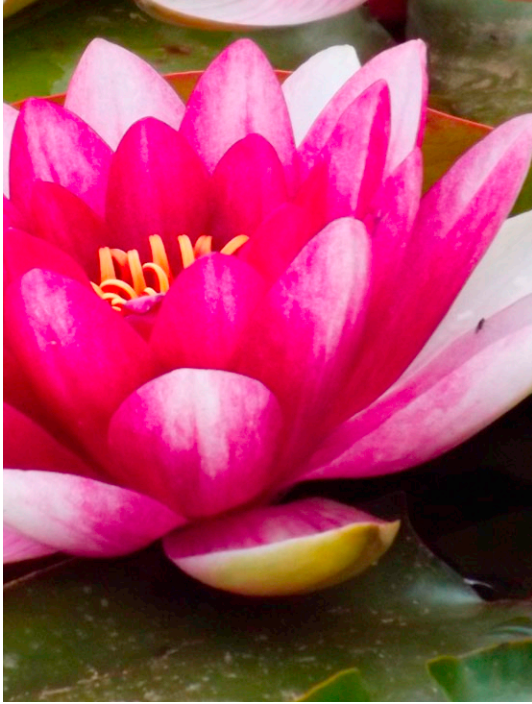
Hebe

Ground Spreading Conifer

Emerald 'n' Gold

Griselinia

Buddleia



## Flowers and Wildflowers

Daffodil

Dragon Arum

Fuchsia

Trailing Petunia

Begonia

Montbretia

Snowdrop

Globe Thistle

Michaelmas Daisy

Hyssop

Lavender

Water-Lily

Yellow Flag Iris

Flowering Rush

Water-Plantain

Marsh Marigold

Ribwort Plantain

Early Purple Orchid

Foxglove

Oxeye Daisy

Red Campion

Ragged Robin

Purple Loosestrife

Primrose





## Flowers and Wildflowers cont.

Teasel

Cleavers

Thistle

Common Ragwort

Figwort

Tufted Vetch

Greater Willowherb

Cuckooflower

Meadowsweet

Creeping Buttercup

Spearwort

Curled Dock

Reed Mace

Daisy

Dandelion

Common Nettle

Bramble

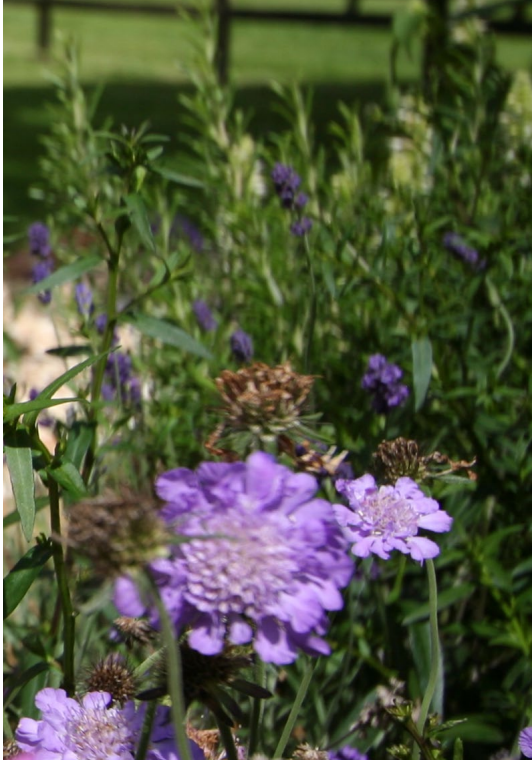
White Clover

Red Clover

Ivy

Hedge Bindweed

Sheep's Sorrel



## Herbs

Thyme

Rosemary

Mint

Water Mint

Water Cress